

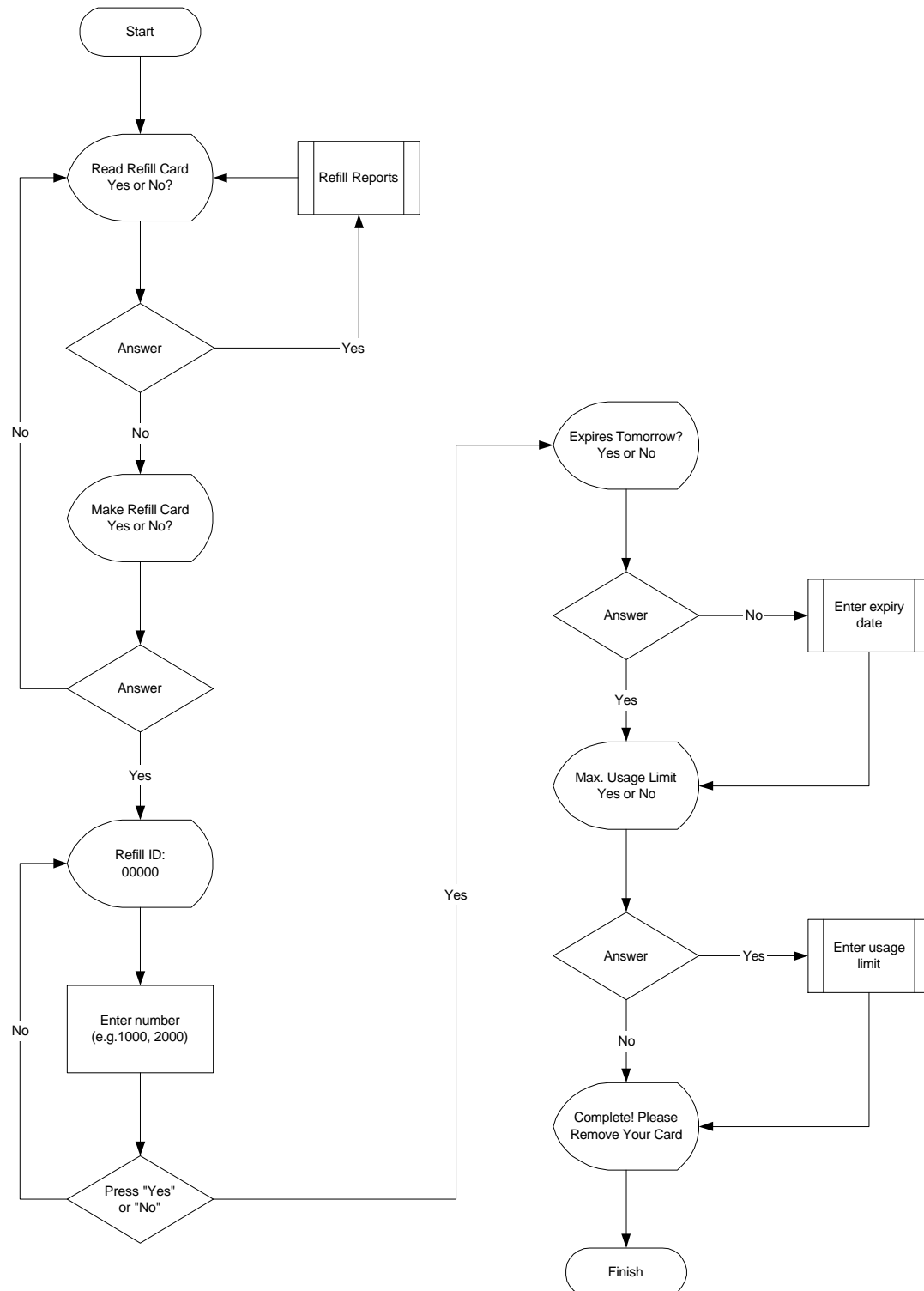
## Preparing a Refill Card

You need a refill card in order to open and refill the units.

It is a good idea to set up both your cards in case you make a mistake – for example, by withdrawing it from the unit too early if there are stock items missing.

I suggest that the two cards are given IDs of, say, 1000 and 2000 – as this minimises the number of keys you have to press.

Insert your Refill Card in the Reception Unit and follow the prompts.



Remove your card and insert the second card as appropriate.